

**Figure 5-1
Wind Rose**
 Forterra CLT Modular Facility
 Darrington, Washington

NOTES:
 Wind Direction = Blowing From
 Total Number of Hours = 8,760
 Average Wind Speed = 3.31 mph
 Data Availability = 99.5%

Meteorological data obtained from two stations operated by the Puget Sound Clean Air Agency for the period between January 1, 2018 to December 31, 2018.

MAUL FOSTER LONGI
 p. 971 544 2139 | www.maulfooster.com

This product is for informational purposes and may not have been prepared for, or be suitable for legal, engineering, or surveying purposes. Users of this information should review or consult the primary data and information sources to ascertain the usability of the information.

Project 1122.08.001
Produced By: agustin
Approved By: B. Swaffar
Print Date: 3/24/2022
Path: X:\1122.08.001\Figs-1 Model Receptor Grid.mxd

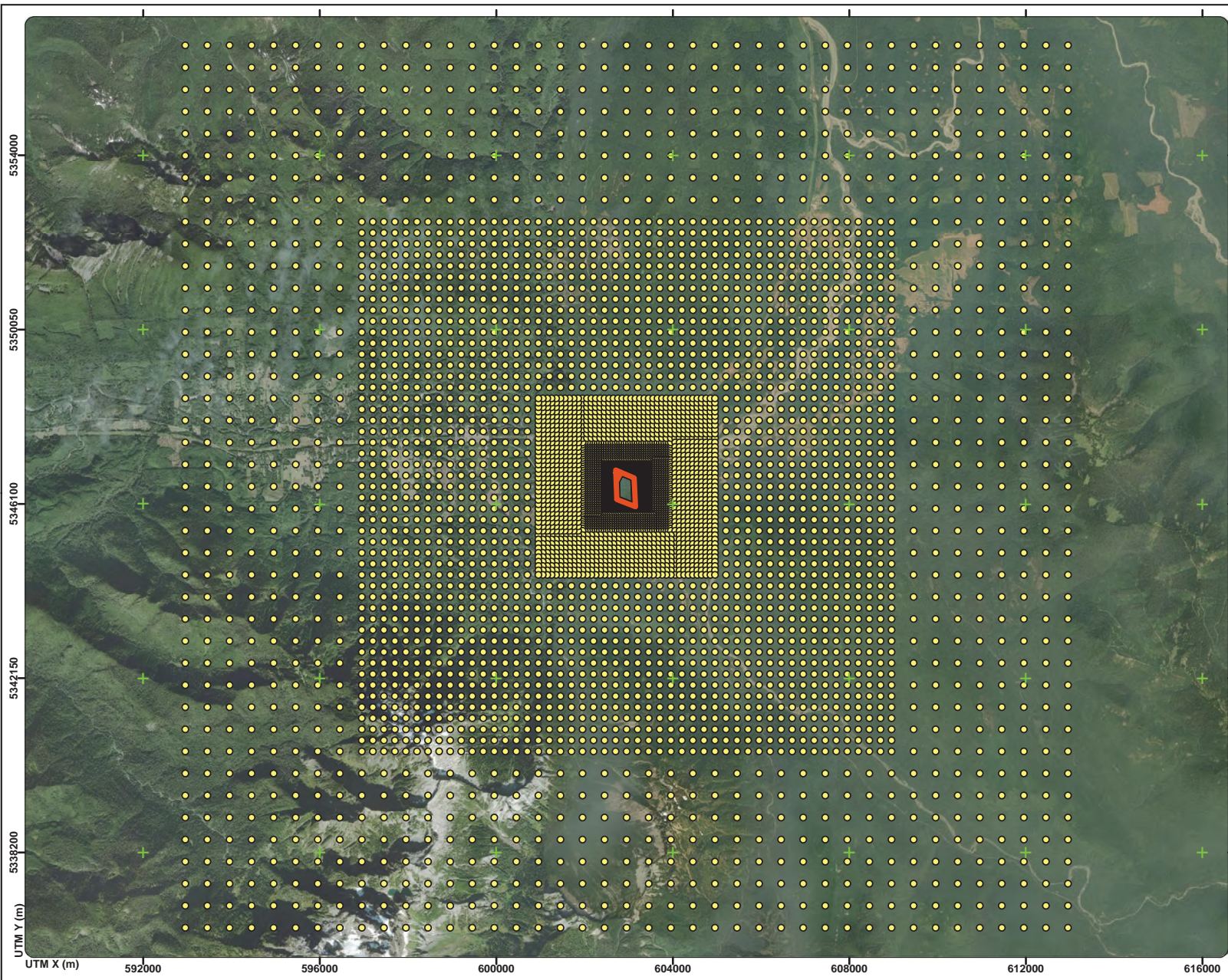
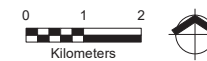
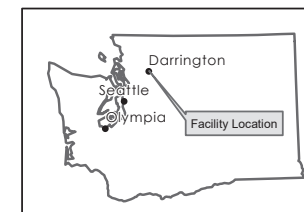


Figure 5-2
Model Receptor Grid
Forterra CLT Modular Facility
Darrington, Washington

Legend

- Receptor Location
- + UTM Grid Guideline
- Proposed Property Boundary

KEY MAP



Source: Aerial photograph obtained from Esri
ArcGIS Online

 **MAUL FOSTER ALONGI**
p. 971 544 2139 | www.maulfooster.com

This product is for informational purposes and may not have been prepared for, or be suitable for, legal, engineering, or surveying purposes. Users of this information should review or consult the primary data and information sources to ascertain the usability of the information.

Project 1122.08.001
Produced By: agustin
Approved By: B. Swaffar
Print Date: 3/24/2022
Path: X:\1122.08.001\Fig5-2_Receptors in Immediate Area.mxd

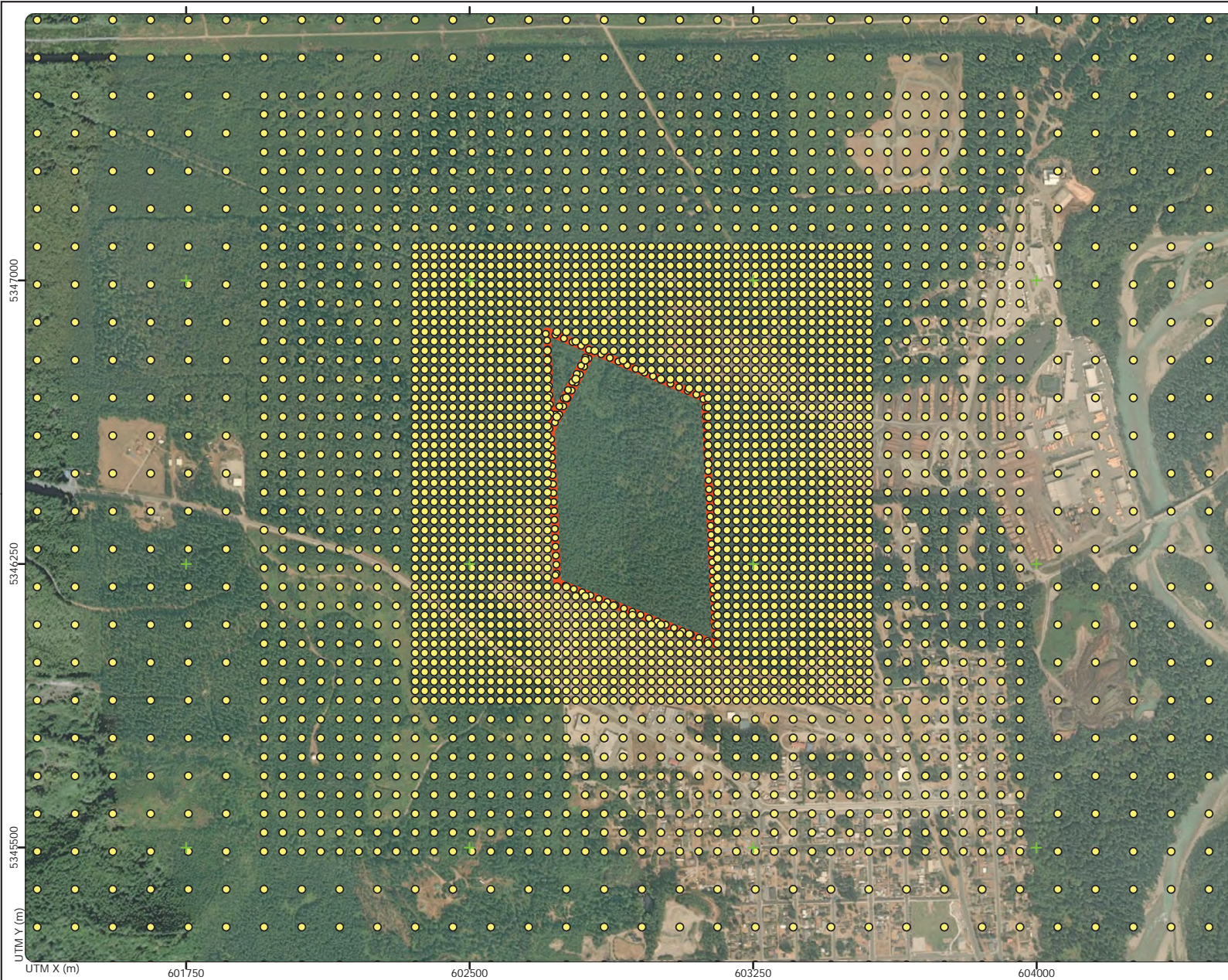
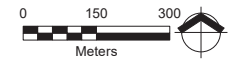
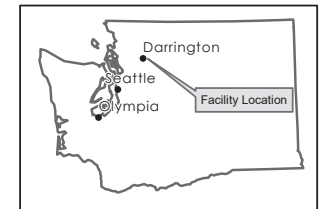


Figure 5-3
Receptors in the
Immediate Area
Forterra CLT Modular Facility
Darrington, Washington

Legend

- Receptor Location
- Proposed Property Boundary
- + UTM Grid Guideline

KEY MAP



Source: Aerial photograph obtained from Esri
ArcGIS Online

MAUL FOSTER ALONGI
p. 971 544 2139 | www.maulfooster.com

This product is for informational purposes and may not have been prepared for, or be suitable for, legal, engineering, or surveying purposes. Users of this information should review or consult the primary data and information sources to ascertain the usability of the information.

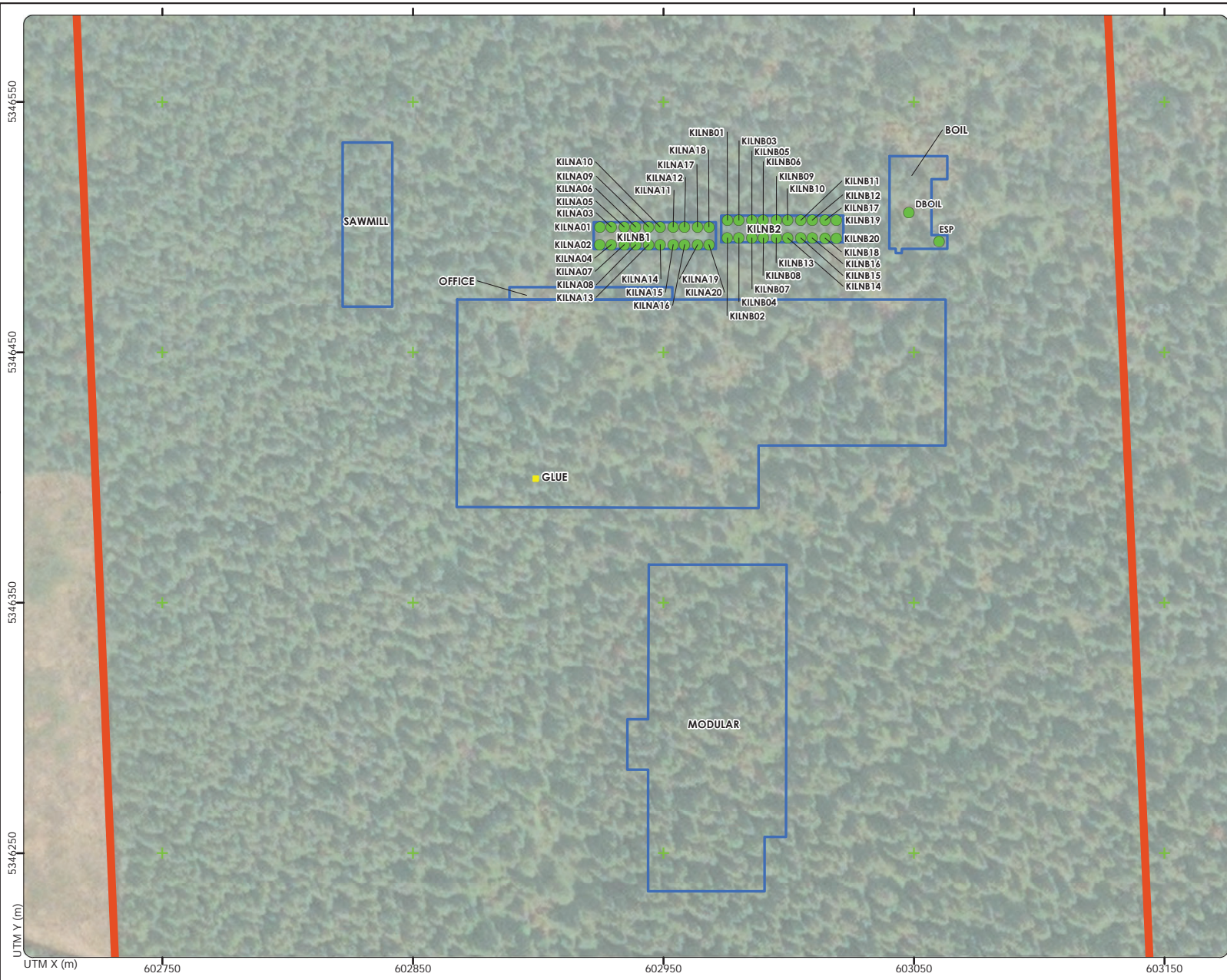


Figure 5-4
Location of Proposed
Downwash Structures
and Modeled Emission Units
Forterra CLT Modular Facility
Darrington, Washington

Legend

- Point Source Location
- Volume Source Location
- Proposed Property Boundary
- Proposed Building Location
- + UTM Grid Guideline

KEY MAP



Source: Aerial photograph obtained from Esri
ArcGIS Online

MAUL FOSTER ALONGI
p. 971 544 2139 | www.maulfooster.com

This product is for informational purposes and may not have been prepared for, or be suitable for, legal, engineering, or surveying purposes. Users of this information should review or consult the primary data and information sources to ascertain the usability of the information.